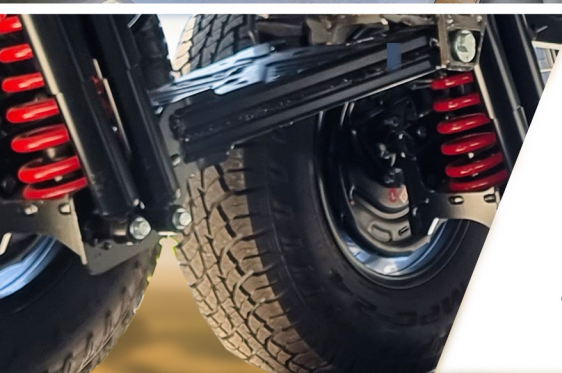
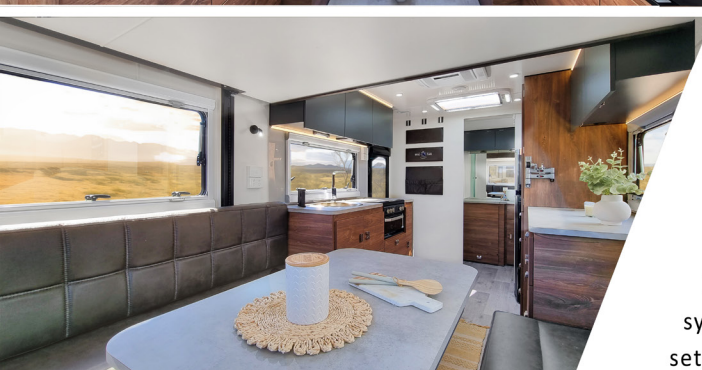




**designer** series



## Sourcing the finest materials.

Exuding class from top to bottom, this premium caravan stands as a testament to unparalleled craftsmanship and design innovation, sourced from the finest materials to ensure unmatched quality and durability.

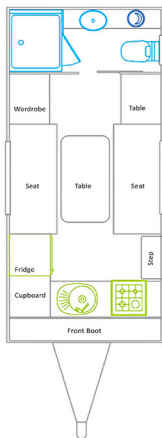
Fully reimagined with new features such as a 2000W Victron MultiPlus system, EnduroX coated chassis and independent suspension, the Designer sets a new standard in luxury travel. The sumptuous interior, reminiscent of a boutique penthouse, seamlessly blends quality with 'soft luxe' design principles, making the Designer Series exceptionally popular among discerning clientele.

Beautifully appointed with all the mod cons including an 2 way air conditioner, 2X 200W solar panels, a top spec entertainment system and bathroom and kitchen fittings fit for a king. We have little doubt that you'll be turning a few heads when you pull up, before inviting the neighbours in for a cuppa.

**The Designer Series. Luxury without the pretense.**



DS16'6-1



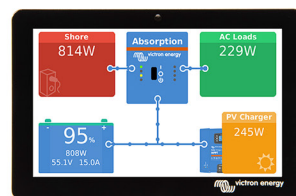
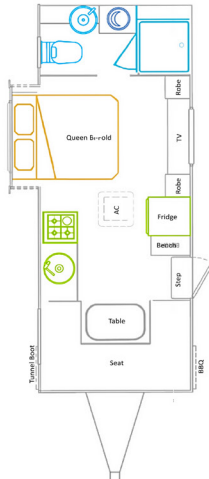
DS17'6'-1



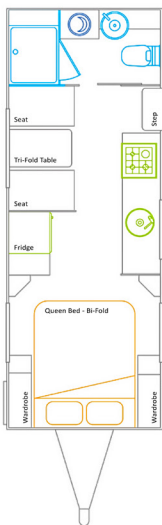
DS18'6-3



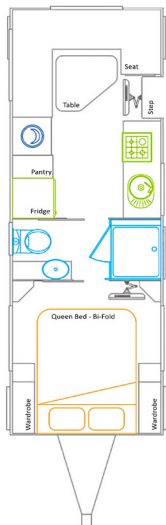
DS19'6-1 SO



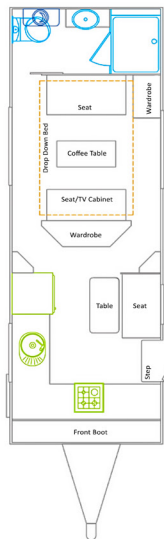
DS21'-2



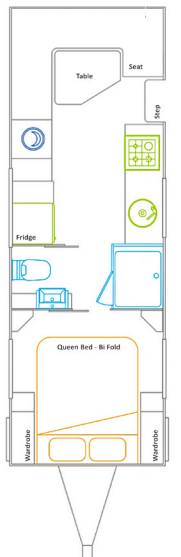
DS21'6-1



DS22'-1



DS23'-4



ALL FLOOR PLANS



e.sales@royalfclair.com.au

www.royalfclair.com.au

t. [03] 9357 8118

DESIGNER FLOOR PLAN	CARAVAN LENGTH (mm)	TRAVEL LENGTH (mm)	TRAVEL WIDTH (mm)	TRAVEL HEIGHT (mm)
DS16'6-1	5030	7510	2500	3150
DS17'6-1	5335	7815	2500	3150
DS18'6-1	5640	8120	2500	3150
DS18'6-3	5640	8120	2500	3150
DS19'-1	5790	8270	2500	3150
DS19'6-1 SO	5945	8425	2500	3150
DS20'-1	6100	8580	2500	3150
DS21'-2	6400	8880	2500	3150
DS21'4-2	6505	8985	2500	3150
DS21'6-1	6555	9035	2500	3150
DS22'-1	6705	9185	2500	3150
DS23'-4	7010	9490	2500	3150

CHASSIS	ANDERSON PLUG	MATS RFC	REVERSE CAMERA WITH SCREEN
CHASSIS LIGHTWEIGHT SUPAGAL	ANTENNA COWFISH 'VANTENNA' FOR TV/RADIO	POT DRAWER IN KITCHEN	MAIN DOOR WITH SECURITY TRIPLE LOCK
MAIN BEARERS 4"	AWNING LED LIGHTS	QUILT COVER SET	TABLE EXTERNAL DROP DOWN WITH LIGHT
SUSPENSION: INDEPENDANT ENDUROX TANDEM 3500kg - 4000KG GTM, SINGLE 2500KG GTM RAISED 3"	BREAKAWAY	COAT HOOKS	TUNNEL BOOTS GALVANISED
A FRAME EXTENDED 20"	DOOR HANDLE LIGHT EXTERNAL	SAFETY HANDRAIL	VENTS EXTERNAL BLACK
A FRAME 6" HIGH 5MM STEEL	LED LIGHTS INTERNAL AND EXTERNAL	STEP FIBREGLASS	WHEEL BRACE
BUMPER BAR 45° 3 ARMS	LED LIGHT IN TUNNEL BOOTS	TABLE WITH ADJUSTABLE LEG (W/A)	WHEEL SPATS CHEQUER PLATE BLACK
DO35 OR DO45 COUPLING WITH CHAINS	LIGHT UNDER BED (W/A)	PULLOUT BIN KITCHEN	WINDOWS DOUBLE GLAZED WITH BLINDS
JOCKEY WHEEL 8"	MICROWAVE	ROLLER BLIND ON MAIN DOOR	PLUMBING
DROP DOWN JACKS	POWER POINTS EXTERNAL BLACK	BATHROOM ACCESSORIES	BBQ SLIDEOUT WITH GAS BAYONET
ELECTRIC BRAKES 12"	RANGEHOOD 12V	EXTERIOR	COOKTOP MINIGRILL GAS / ELECTRIC
ELECTRONIC STABILITY CONTROL	STRIP LIGHT FRONT AND UNDER OHC	12V & USB EXTERNAL	WASHING MACHINE
PRE-COATED TIMBER FLOOR	TV 24' DVD COMBO	ACCESS DOORS (BLACK FRAME/CHEQUER PLATE INFILL)	HOT WATER SERVICE GAS / ELECTRIC
SPARE WHEEL BOLT ON	TV ENTERTAINMENT BOX EXTERNAL	AWNING BLACK ARMS/CHARCOAL CANVAS	SHOWER MOULD FIBREGLASS
RIMS 16" 6 STUDS	SMOKE DETECTOR	PRESSURE HATCH	SHOWER DOOR FROSTED GLASS
TYRES 265/75R16 ALL TERRAIN	INTERIOR	CHEQUER PLATE FRONT, BACK AND SIDES	ENSUITE DOOR MIRROR (W/A)
	ACRYLIC OR LAMINATE SPLASHBACK KITCHEN	SOLID TIMBER WALL STRUCTURE - CNC CUT	GAS BOTTLES 2 X 9KG
	BEDHEAD FULL HEIGHT (W/A)	DOOR STOP	TOILET CASSETTE
	BED SLATTED BASE	GALVANISED WHEEL ARCHES	SQUARE SINK
	BED DOUBLE DROP DOWN MOTORISED (W/A)	GRAB HANDLES FRONT AND REAR	VANITY CERAMIC
	MATTRESS INNERSPRING PILLOW-TOP FOR BED	ROOF HATCH 12V + LED LIGHT IN BATHROOM	BLACK TAPWARE THROUGHOUT
	COLOUR FURNITURE	ROOF HATCH LARGE WITH LIGHT	FLICK MIXER TAP
	CONTEMPORARY PULL HANDLES	INSULATION FULL	WATER TANKS X2 WITH STONE GUARD (W/A)
	CONCEALED HANDLES UPPER DOORS	J-MOULD AND INSERT	WATER LEVEL INDICATORS
	CUTLERY TRAY	ALUMINIUM COMPOSITE PANEL ON FRONT, BACK AND SIDES	WATER PUMP 12V
	WALL POCKETS	ALUMINIUM COMPOSITE PANEL ROOF WHITE	GREY WATER TANK
	DRAWERS METAL SIDED	JACK HYDRAULIC AND JACK HANDLE	DRAIN TAP FITTED TO WATER TANK
	FIRE EXTINGUISHER RECESSED	REFLECTORS	LOCKABLE WATER FILLER BLACK
	LAMINATE BENCHTOPS		MAINS PRESSURE TAP ON A/FRAME
	WATERFALL BENCHTOP FOR KITCHEN		MAINS PRESSURE WATER FILLER