

MILLARD

CARAVANS



Your ticket to *freedom* since 1947



2024 Range

MFLOW



The trusted name in Australia for over 75 years

Australian Made · Australian Owned · Australian Tough · For Over 70 years

From humble beginnings in a small factory located in Mortlake, NSW to today, Millard Caravans is one of Australia's most respected and highly regarded caravans with a **proven track record since 1947**. After all this time we're still one of the best caravan manufacturers in Australia, with all Millard Caravans hand-built in our factory in Sydney.

We pride ourselves on **value for money**. We make sure our caravans have everything you need, plus that little extra luxury that you deserve. **Quality** is at the core of everything we do. We only work with the best of the best and source the highest quality materials, finishes and appliances, just for you.

Our **customer service** is what sets us apart. We're always finding ways to put you first and help you to make the best decisions so we can build your dream caravan together. Using **cutting edge manufacturing** technics and materials, our architecturally designed caravans are built to reflect your tastes and the lifestyle you want to live.

5 year Structural + 2 year Manufacturing warranty

All Millard Caravans are built to last with a hot dipped galvanised chassis, an Aluminium structural wall frame and full piece composite roof.

This gives you peace of mind in the longevity of the life of your quality-built Millard caravan which is backed by our commitment and promise of a 5 year Structural and 2 year Manufacturing warranty*.

Millard Caravans are accredited by RVMAP, the official accreditation key of the caravan industry. The RVMAP accreditation key is a symbol of a manufacturer's commitment to consistently build and supply quality products that adhere to all relevant Australian design rules, regulations and standards.

Millard Caravans was granted vehicle approval on the 27th June 2022 by the Department of Infrastructure, Transport and Regional Department and Communication.

The significance of this approval means that our entire range; MFLOW, TOURA, and BREAKAWAY are fully compliant to Australian Design Rules (ADR).

Millard Caravans VTA (Vehicle Type Approval) VTA-060501

*Warranty period commences from the date of purchase and is effective for all new caravans built from January 2020 onwards. Terms and Conditions apply.



MFLOW

The MFLOW range

The on-road MFLOW is Millard's latest range, designed for families and couples looking for a feature-packed van at an affordable price.

Built with our signature hot-dipped galvanised chassis, single-sheet roof and aluminium frame, the Mflow's uncompromising quality makes it the ultimate companion on your family holidays.

MFLOW comes with more standard features eliminating the need to add-on options. Select upgrades and styling options are available across our standardised couple and bunk models.



MFLOW 17ft 6

Exterior

Built with our signature hot-dipped galvanised chassis, single-sheet roof and aluminium frame. The MFLOW is manufactured with easily maintained flat light weight sandwich panel consisting of low density polyethylene core bonded to two thin coil coated aluminium sheets. The standard colour for the composite panel is white but also available in silver, dark grey and charcoal.

The list of exterior inclusions is endless, with 2x200w solar panel, external awning, power point + TV point, external speakers, reversing camera, external shower and extra annex lights all included as standard.

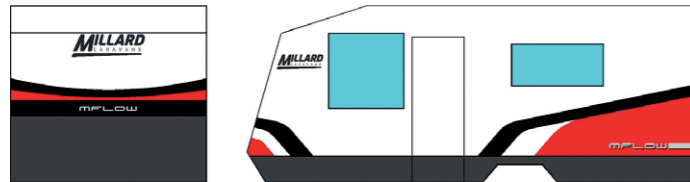
High black checkerplate cladding also comes as standard to protect your investment from the harsh conditions on the road and optional add-ons include toolbox with slider, mesh stoneguard, bike racks, and outdoor kitchen.

For a full list of all standard inclusions and options please view the Specifications list in the back of this brochure.

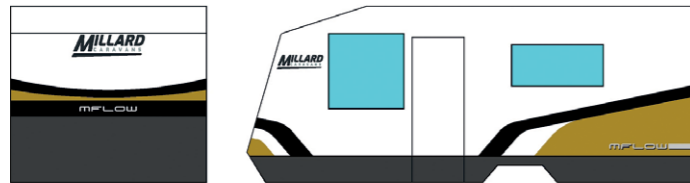
Exterior decals on all MFLOW models can be selected in one of four specially designed colour schemes.

Exterior Decal Options

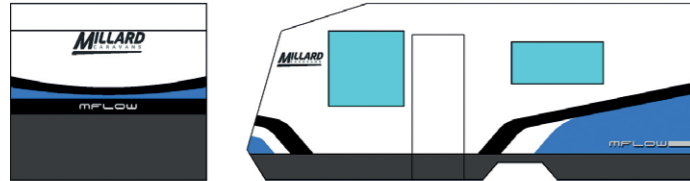
Red



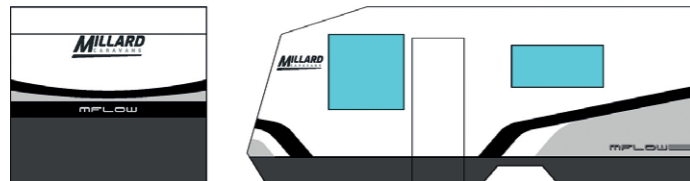
Gold



Blue



Silver



Exterior Panel Options

White



Silver



Dark Grey



Charcoal



Interior

Millard Caravans feature the latest appliances, durable luxury finishes, CNC cabinetry, and all the modern technology required to ensure the perfect balance of comfort and longevity.

Our interior finishes and colour palettes have been expertly designed to compliment the Australian landscape and to create a timeless, tranquil oasis when on the road.



New MFlow has even more storage room with the introduction of a corner cupboard.

The MFLOW range features Airconditioning, Full oven, Exclusive front loader washing machine, TV, Radio and Speakers, Microwave and 3-way fridge.

Our Smart TV's range from 24" to 27" dependant on layout and size.



New MFlow has headrest support and washing machine concealed behind a cupboard door



The new fully moulded acrylic face shower feels more elegant and spacious with the transparent glass shower door.

Interior



21ft 6 RD – Side Club Lounge

Black Pack Enhancement



19ft6 CD – Dinette



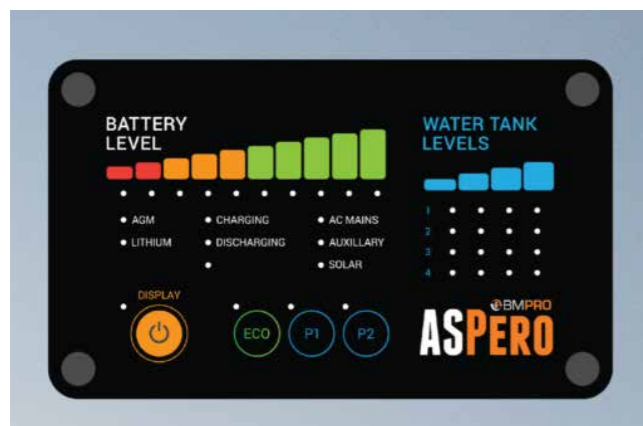


Electrical

Although Millard caravans are known for its famous DNA (Hot Dipped Gavanised Chassis, Aluminium Frame and One-Piece Roof), they are designed to please with their spacious layouts & high end finishes.

With all these features in place, Millard Caravans also ensures you have the latest in electrical industry-leading power.

Millard's MFLOW caravan comes with a lithium battery, more solar units and BMPRO's ASPERO Battery Management system and information display that powers your loads, charges your battery and provides you with real-time information about your battery status and water tank levels.



MFLOW standard specification includes:

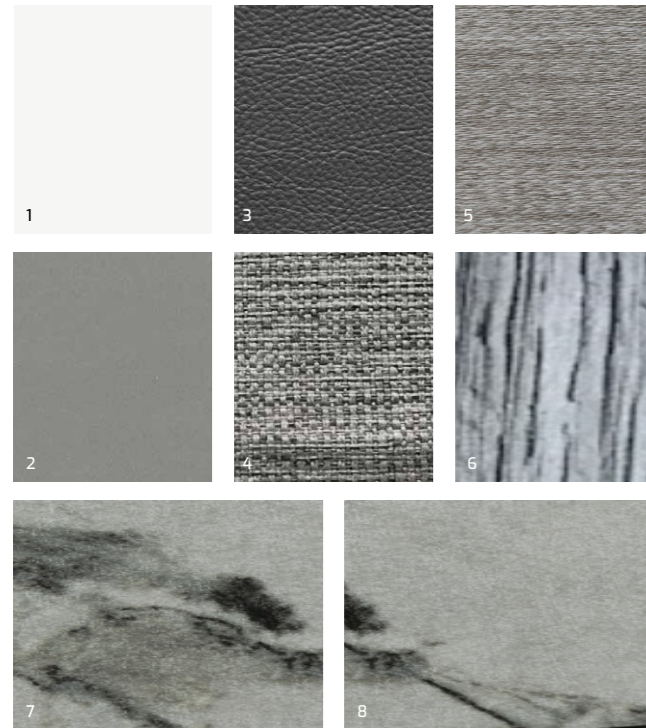
- BMPRO ASPERO Battery Management System
- BMPRO ASPERO Display Unit
- 1x 120AH Lithium Battery
- 2x 200W Solar Panels
- 2x Water Tank feeders with 2 dipper water level indicators
- 20 amp Miniboost



Interior Schemes

Design 1

The perfect blend of greys with white to create a restful retreat



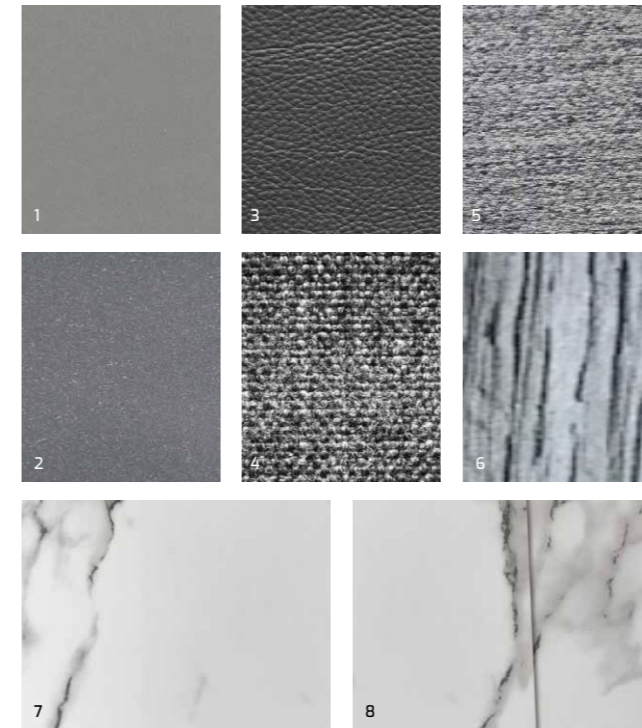
Design 2

Luxurious creams creating a cosy haven and soothing sanctuary



Design 5

Timeless colour scheme, creating a harmonious and calm atmosphere



Design 6

The timber theme creates a natural environment of the outdoors



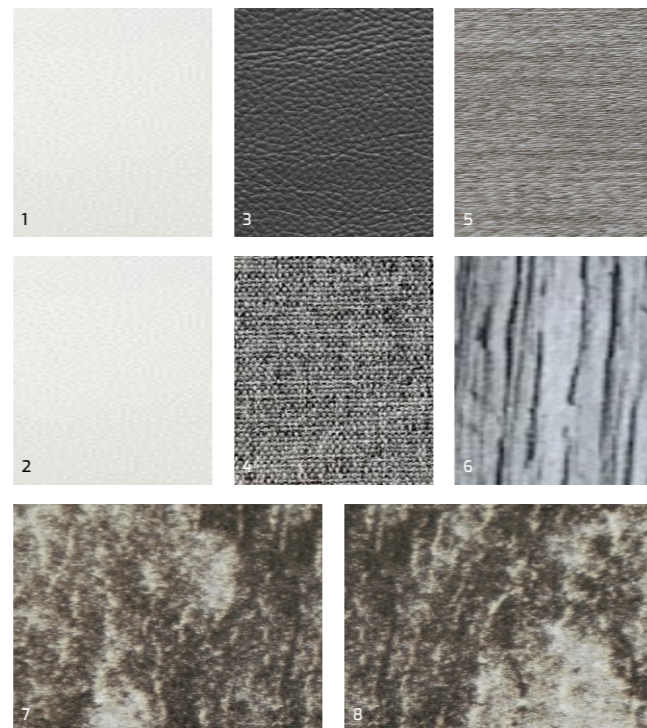
Design 3

Warm neutrals to relax or simply free your mind from life's worries



Design 4

The warm white brings the shared space together, filled with an intimate cosiness



Design 7

Bold design yet a calming and relaxed space, warm and inviting



Design 8

Fresh, crisp feel with bold statements of white and grey undertones



Key
 1. Cabinetry Doors Top
 2. Cabinetry Doors Bottom
 3. Upholstery PU Leather Option
 4. Upholstery Fabric Option
 5. Curtain
 6. Flooring
 7. Kitchen & Vanity Splashback
 8. Kitchen & Vanity Benchtop

Note 1. Cabinetry Doors Bottom presets the Fridge/Microwave cabinetry colour.
 Note 2. Cabinetry Doors Top presets the Bedroom cabinetry colour (All doors Top + Bottom).
 Note 3. Cabinetry Doors Top presets the Bathroom Vanity & Overhead cabinetry colour (All doors Top + Bottom).

Colourways: Please note you can mix and match colours from the 8 options. Ideally the recommendations from Millards designer team should be followed. Please note colour variations occur from batch to batch and from the presented images

MFLOW

Layouts

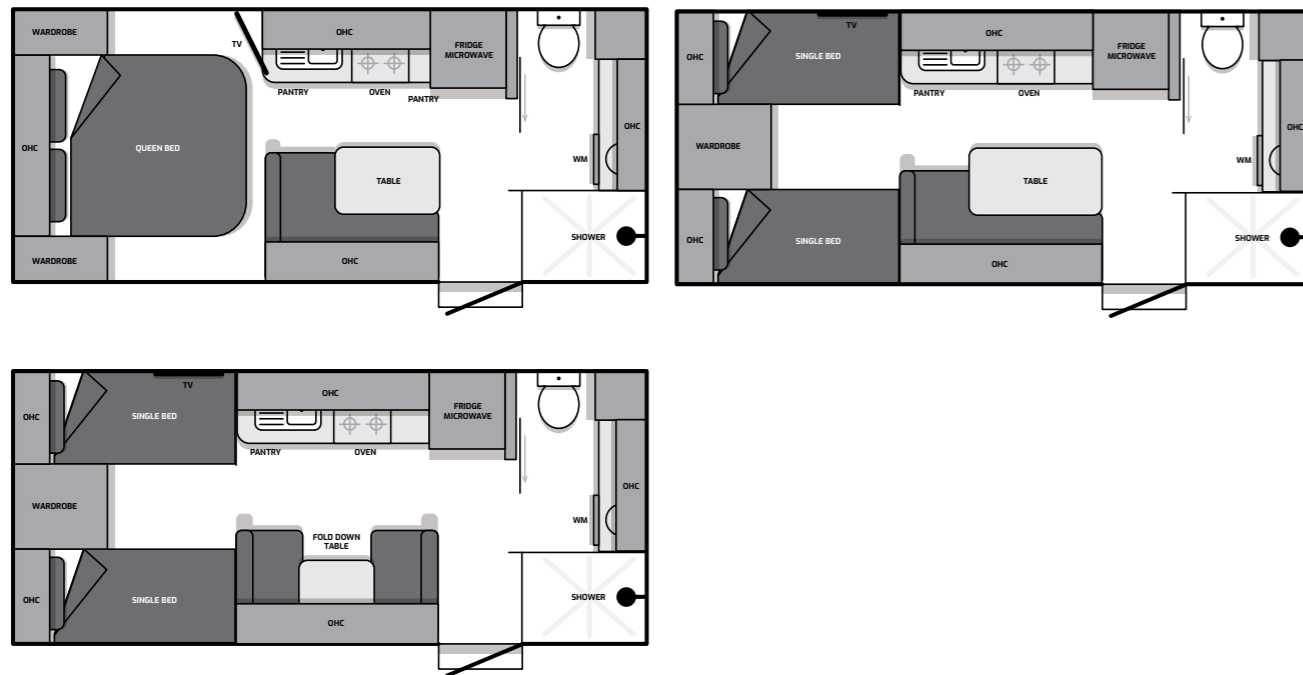
Choose from our range of value-packed standard layouts designed to accommodate couples and families, and feel free to talk to us about optional upgrades to make the MFLOW your own.

MFLOW 17ft 6

Centre Door (CD)



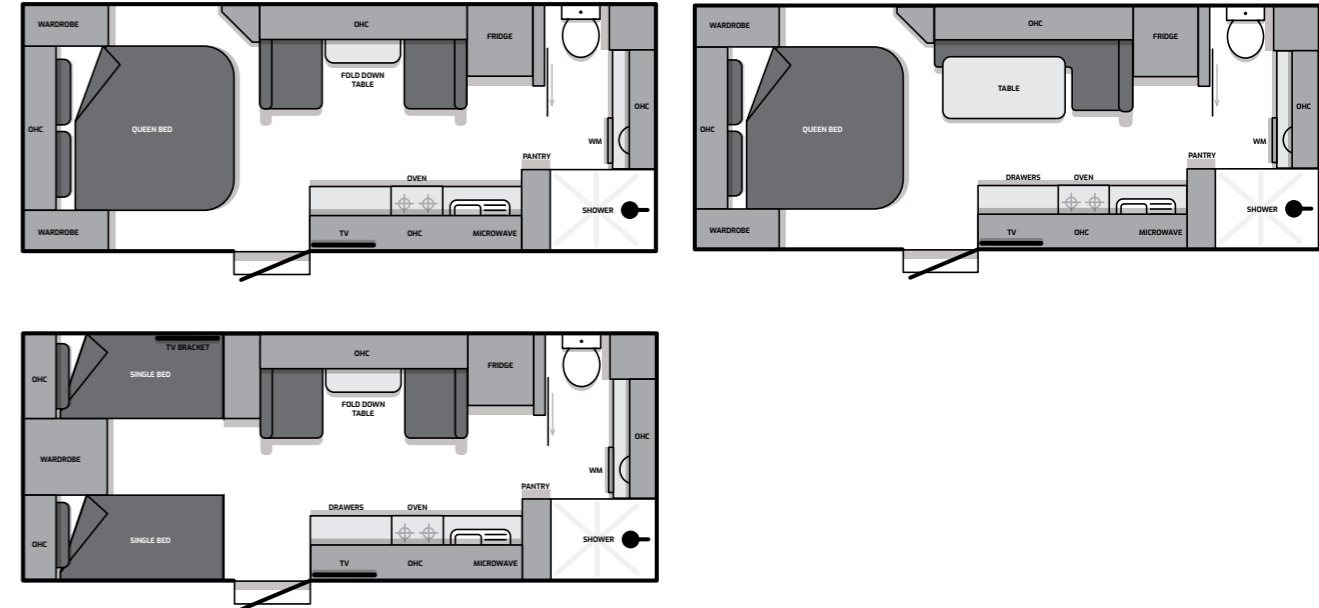
Rear Door (RD)



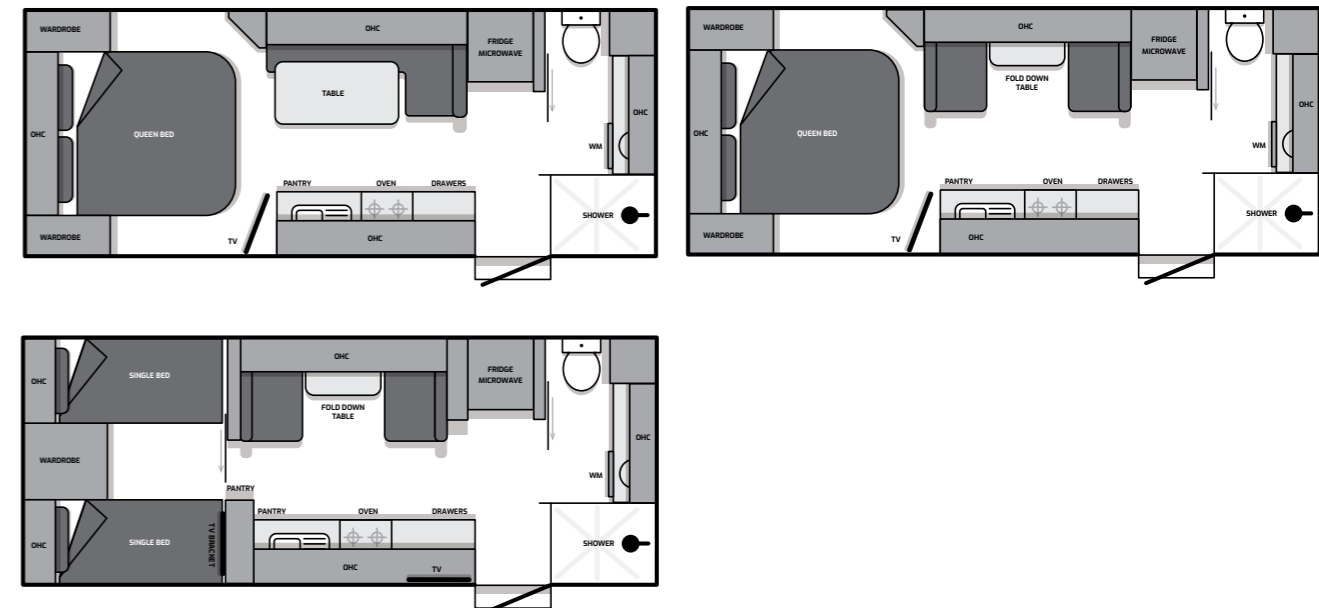
Key
 OHC Overhead cupboard
 Shower Shower
 Fridge Fridge
 MW Microwave
 WM Washing Machine
 Robe Robe
 TV Television

MFLOW 19ft 6

Centre Door (CD)



Rear Door (RD)



Key
 OHC Overhead cupboard
 Shower Shower
 Fridge Fridge
 MW Microwave
 WM Washing Machine
 Robe Robe
 TV Television

Layouts

Choose from our range of value-packed standard layouts designed to accommodate couples and families, and feel free to talk to us about optional upgrades to make the MFLOW your own.

MFLOW 21ft 6

Centre Door (CD)



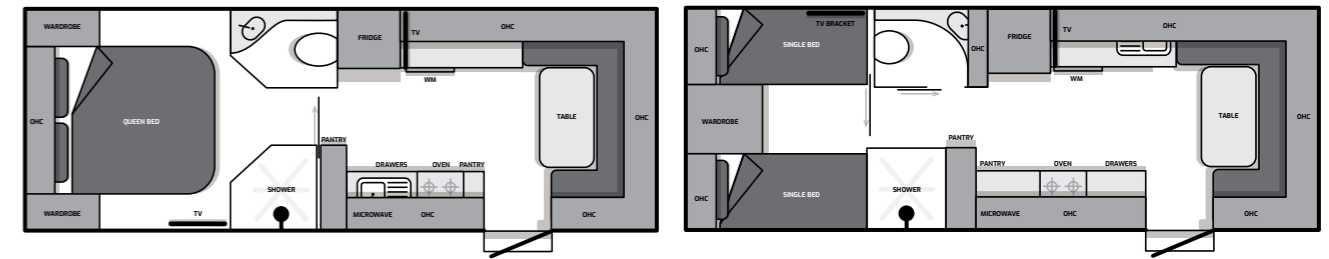
Rear Door (RD)



Key
 OHC Overhead cupboard
 Shower Shower
 Fridge Fridge
 MW Microwave
 WM Washing Machine
 Robe Robe
 TV Television

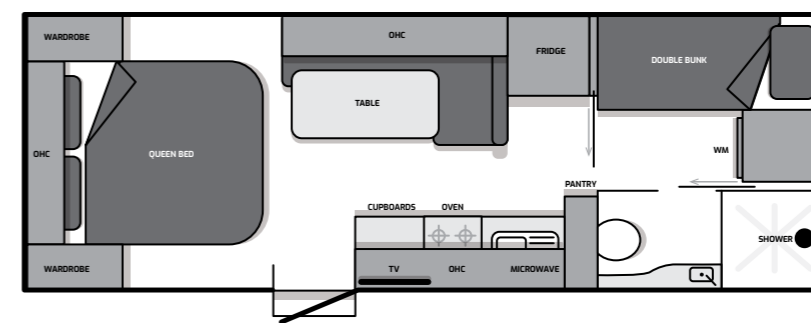
MFLOW 21ft 6

Rear Door (RD) Centre Bathroom



MFLOW 22ft Double Bunk

Centre Door (CD) (Optional Third Bunk)



Key
 OHC Overhead cupboard
 Shower Shower
 Fridge Fridge
 MW Microwave
 WM Washing Machine
 Robe Robe
 TV Television

Specifications

Model	17ft 6	19ft 6	21ft 6	22ft Double Bunk
Door Position	CD or RD	CD or RD	CD or RD	C/D
Seating Standard	L- Lounge	Dinette	Dinette	L- Lounge
Seating Options		L- lounge	Side Club	Rear Club
Dimensions (MM)				
External length	5475	6075	6675	6835
Internal Length	5350	5950	6550	6710
Total Length includes A frame & Spare Wheel	7760	8360	8790	9120
External width (including Rollup Awning)	2500	2500	2500	2500
Internal width	2285	2285	2285	2285
Internal Height	2010	2010	2010	2010
External Height with AC	2980	2980	2980	2980
Weights (kgs)				
Average Ball Weight	120(CD), 135(RD)	175(CD), 155(RD)	195(RD), 160(CD) 270(Rear Club)	220
Average Tare	2250	2650 - 2750	2850	2800
ATM (see Note 4)	2500 + Ball Weight	3500	3500	3500
Carry Load or Payload	365 - 420	750 - 850	650	700
Indicative weights, subject to change as dependent on the specification and options - See note 2				

Construction				
Hot Dip 6" Galvanised Chassis plus 2" raiser	NA	•	•	•
Hot Dip 6" Aframe and 4" Galvanised Chassis plus 2" raiser	•	NA	NA	NA
Aluminium Wall Frame	•	•	•	•
Full Piece Composite Roof	•	•	•	•
Insulation to Walls and Ceilings	•	•	•	•
Marine Ply Flooring	•	•	•	•
Aluminium Composite Panel (White, Silver, Grey and Charcoal)	•	•	•	•
Alko Leaf Spring suspension 2.5T, 12 inch brakes	•			
Alko Leaf Spring suspension 3.5T, 12 inch brakes + 2" Raiser	NA	•	•	•

Exterior				
15inch wheels - Black with Coloured Inserts	NA	•	•	•
16inch wheels - Black with Coloured Inserts	•	o	o	o
Black Checker Plate, approx 550mm on sides	•	•	•	•
Vinyl Decals Colours: Gold, Red, Blue, Silver, Charcoal	•	•	•	•
2 x 95litre Water Tanks	•	•	•	•
Grey Water Tank (110 litres)	•	•	•	•
Picnic Table with Map	•	•	•	•
Mains Tap to A Frame & Mains Pressure	•	•	•	•
2 x 9kg Gas Bottles	•	•	•	•
Two Solar Panel with Regulator (200watts each)	•	•	•	•
External Awning with Centre support Bracket	•	•	•	•
Gas Bayonet	•	•	•	•

Key
 • Standard
 o Optional
 NA Not Available

Model	17ft 6	19ft 6	21ft 6	22ft Double Bunk
External Power Point and TV Point	•	•	•	•
External Shower	•	•	•	•
External TV Point + Arm+ Locker	o	o	o	o
Tool Box with One slider	o	o	o	o
External Speakers	•	•	•	•
Reversing Camera	•	•	•	•
Annexe Lights: Door side x3	•	•	•	•
LED Bar Light : Front and Back	•	•	•	•
Additional Spare Wheel	o	o	o	o
Grab Handles Front Only	o	o	o	o
Exterior				
Lithium Battery - 120 H	•	•	•	•
BMPRO ASPERO Management System	•	•	•	•
20amp Booster	•	•	•	•
Information Display - Water level indicators and Battery monitor	•	•	•	•
Anderson Plug	o	o	o	o
Smart TV	24"	27"	27"	27"

Interior				
CNC Cabinetry	•	•	•	•
Exclusive Upholstery Designs and Fabrics	•	•	•	•
Full Size Bedhead with pocket spring mattress	•	•	•	•
Air Conditioner	•	•	•	•
Dometic RUA6408X 2 Door ABSRP Fridge 3WAY 188L	•	•	NA	NA
Dometic RUA8408X 2 Door ABSRP Fridge 3WAY 224L	NA	NA	•	•
Dometic RUC 6408X 2 Door Compressor Fridge 188L	o	o	NA	NA
Dometic RUC 8408X 2 Door Compressor Fridge 224L	NA	NA	o	o
Dometic MC101 Full Oven 3 Burner + 1 Gas - Grill - Oven	•	•	•	•
Dometic MC102 Cooktop 3 Burner + 1 Gas - Grill	o	o	o	o
Microwave	•	•	•	•
Slimline RangeHood	•	•	•	•
QFlow Exclusive Front Loader Washing Machine	•	•	•	•
Winegard HD Antenna	•	•	•	•
Additional TV Point Plus Wall Bracket	o	o	•(RD only)	o
Additional Smart TV + Arm	o	o	o	o
Sirocco Fans	o	o	o	o
Skylight Hatch with LED lighting (450x400mm)	•	NA	NA	NA
Skylight Hatch with LED lighting (700x500mm)	NA	•	•	•
Ensuite - White Round Basin / Chrome fittings	•	•	•	•

Key
 • Standard
 o Optional
 NA Not Available

Specifications

Model	17ft 6	19ft 6	21ft6	22ft Double Bunk
Fold Down Dining Table	NA	▪	Subject to Seating Configuration	NA
Telescopic Dining Table with Tic Cushion	▪	o		▪
2 Bathroom Exhaust Hatches	▪	▪	▪	▪
Sliding door at Ensuite	▪	▪	▪	▪
Inline water filter at kitchen tap	▪	▪	▪	▪

Family Bunk Van				
Additional Bunk	-	-	-	o
External Access Hatch 893x228mm (under 1st Bunk Bed for Double Bunks only)	-	-	-	o

Bed Configuration				
Single Beds	o	o	o	o
Single Beds - Additional TV For 19ft6 RD, 19ft6 CD, 21ft6 RD & 21ft6 CD	o	o	o	o

Safety				
Breakaway Safety System	▪	▪	▪	▪
Fire Extinguisher	▪	▪	▪	▪
Smoke Alarm	▪	▪	▪	▪
Door - 1850mm External 4 Pin lock with Security Screen	▪	▪	▪	▪
AL-KO ESC (Electronic Stability Control)	o	o	o	o

Design				
Fabric/Splash Board, Vanity, Kitchen Bench				
Number of Colour Combinations	8	8	8	8
Dining/Seating Configuration				
L- Lounge with Tic Cushion	▪	o	NA	▪
Dinette / Café Seating	NA	▪	▪	NA
Rear Club Lounge with Tic Cushion - 21ft6 RD	NA	NA	▪	NA
Side Club Lounge with with Tic Cushion - Bed Conversion - 21ft6 CD & RD	NA	NA	▪	NA

Note 1:
Mesh Stone Guard or Tool Box, cannot be a combination unless gas bottles are relocated in the toolbox

Note 2:
The tow ball and tare weights are only a guide and will change dependent on accessories fitted to your caravan. It is advisable to discuss this with your Millard Caravans Dealer covering your specific requirements. Millard Caravans allows an amount of additional weight (Payload) for each individual unit manufactured above the initial manufactured Tare weight of the unit.

Note 3:
Options are layout dependent and some options are not available on certain models. Please confirm with the dealer.

Note 4:
For 17ft6 Mflow, increase to 16 inch wheels, the ATM is 2500kgs plus the ball weight

Note 5:
Maximum solar panels 2 x 200W, otherwise alternate management system required.

Note 6:
For 3000W Inverter an additional 120AH Lithium Battery is required

Note 7:
Product substitution may occur at times due to supply shortages, product discontinuation, product recall or other unforeseen reasons. Millard will inform the Dealer of the change which does not constitute a reason for order cancellation nor delaying the completion of the Caravan.

Key
 ▪ Standard
 o Optional
 NA Not Available

Optional Extras

Black Pack Option (Inclusions Noted)
Matt Black Kitchen Sink
Matt Black Basin
Matt Black Shower Rail and Head
Matt Black SingleTowel Rack
Matt Black Tiolet Roll Holder
Black Handles

Internal Options
Additional Bunk
Single Beds (Drop Down Doors under bed and BedSide Drawers)
Telescopic Dining Table with Tic Cushion

Plumbing
Truma Combi D6 Diesel Heater WMK Black
Eberspacher D2 Diesel Heater
Webasto AT2000 Diesel Heater with 12 litre Tank
Aufocus Diesel Heater
Truma Vario Gas Heater
SwiftB01Yr Swivel Slide Out BBQ
Dometic Slide Out Kitchen
Dometic MC102 Cooktop 3 Burner + 1 Gas - Grill
Truma AquGo HWS
Drink Water Filter + Gooseneck Tap (Chrome)
Dometic RUC 640BX 2 Door Compressor Fridge 188L
Dometic RUC 840BX 2 Door Compressor Fridge 224L

External Options
Bike Rack
D035 Coupling
Mesh/Stone Guard (Note 1)
AL-KO ESC (Electronic Stability Control)
Pressure Hatch / Scupper Vent
893x228mm Access Hatch (under 1st Bunk Bed for Double Bunks only)
Front Window with Cover
Upgrade to 16 Inch Wheels
Tool Box with One Slider
Skylight Hatch with LED Lighting
Underslung Wheel Carrier (NA on 21ft6 Rear Club)
Double Bar Rear Bumper Bar
Additional Spare Wheel
Gas Bottles inside the Toolbox

Electrical
Additional Solar Panel and Regulator 200 watts (Note 5)
12V Sirrocco Fans (White or Black)
Additional 12V Power Point Outlet
Additional External Power Point
Additional Internal Double Power Point
External TV Point + Arm + Locker
Additional Battery
Extra Annexe Light
External Bar Light
Sphere Satellite System
Additional Internal TV Point
Additional Internal TV Point + TV + Bracket
Alternate Lithium Battery Package (Refer to Lithium Option Bundles)
AGM 100AH Battery
Inverter's refer to pricing options

MILLARD

CARAVANS

Unit 1/36-42 Orange Grove Road,
Warwick Farm NSW 2170

02 9829 2055

info@millardrv.com.au

Your ticket to *freedom* since 1947

Your Millard Caravans Dealer:

